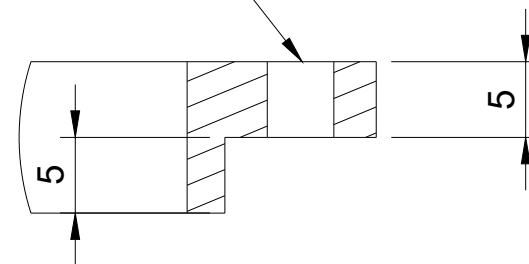
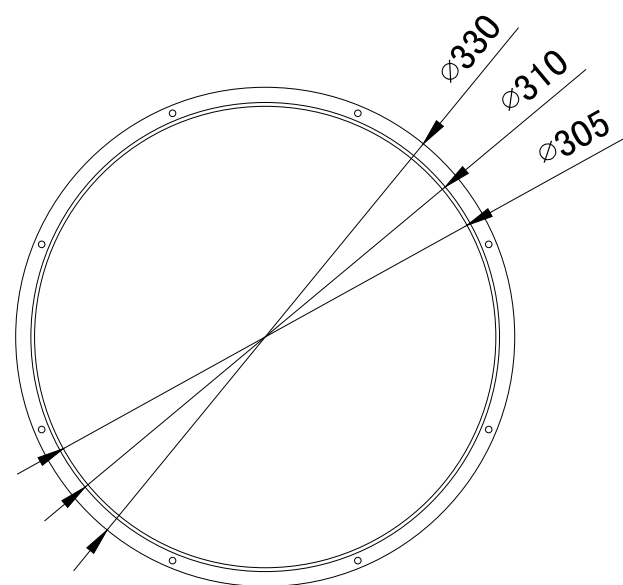
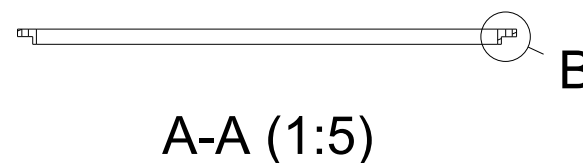
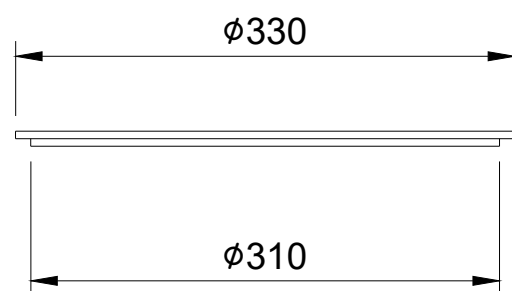
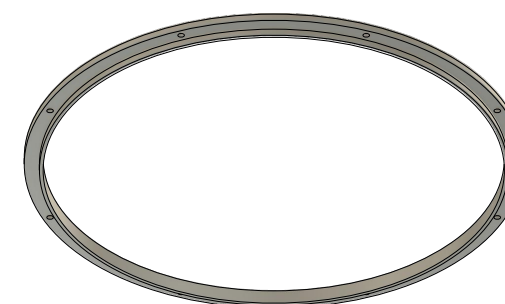
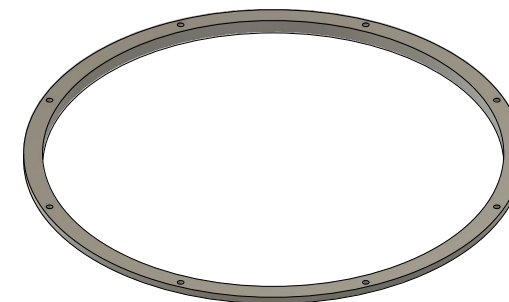


M4 Through hole



B (2:1)



Unit: mm

Note:
Unless otherwise specified

- Tolerance: 2PL ± 0.005
- Edge: 0.4 x 45°
- Inside cor rad: 0.4

Dept. ISAPS	Technical reference	Created by Po-Yu Chang 2020/6/3	Approved by
		Document type	Document status
		Title ST10_Spherical Tokamak OringPress	DWG No. PGS202006006_CPU
		Rev. A	Date of issue 2020/6/4
			Sheet 1/1